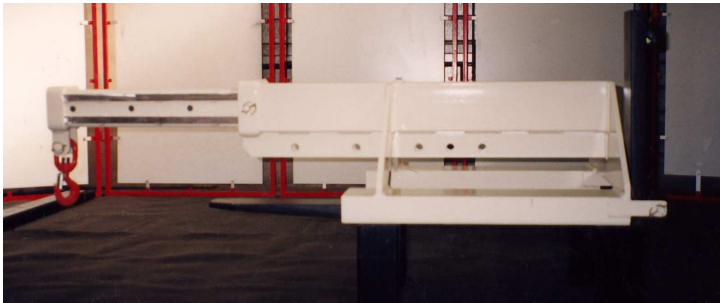
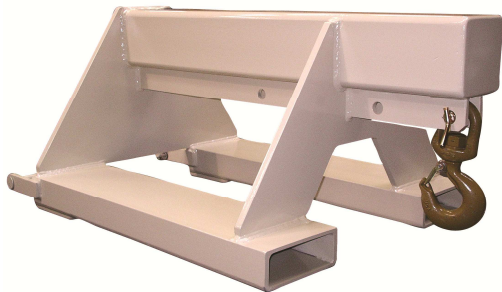




THE ATTACHMENT AT YOUR DIMENSIONS

application :

This type of attachment can be mounted within shortest time without a need for screws on the existing forks and changes the forkliftruck to a multi-load handling device.



crane traverse

-Standard models up to capacities of 5 metric tons (other son demand)
 -simple and easy mounting on forks and fixation behind the bending point of fork

technical characteristics:

- Standard models from 2,5 to 8 metric tons (other son demand)
- Fixing points for the hook every 200 mm distance
- stable fixation of device behind forks bending point by bolts and pins

Models :

- fixed version
- manually or hydraulically telescopic
- manually extendable

Options :

- Height of hook as required
- number of fixing points for the hook to be announced
- semi-automatic fixation system